



The Bhagirathi Cooperative Milk Producers' Union Limited

(Feeder Dairy:Panchanantala:Berhampore:Murshidabad)

NOTICE INVITING e-TENDER

BU/ENGG/CIVIL/0322

Dated:02.06.2025

The Bhagirathi Cooperative Milk Producers' Union Limited invites E-tender in two bid system from reputed contractors having experience in execution of civil works for Construction with repairing of out side boundary wall at Feeder Dairy (BCMPUL),Panchanantala , Berhampore , P.S- Murshidabad,Pin-742101.

IMPORTANT DATE AND TIME SCHEDULE

Sl. No.	Particulars	Date & Time
1	Date of uploading NIT Online	02.06.2025 at 1600 hrs
2	Documents download start date (Online)	02.06.2025 at 1605 hrs
3	Technical Bid proposal submission start date (Online)	02.06.2025 at 1610hrs
4	Bid Submission end date (Online)	16.06.2025 at 1600 hrs
5	Technical bid opening date	18.06.2025 at 1600 hrs
6	Pre bid Meeting	NIL
7	Financial Bid Opening date	To be notified later

The details of work are given below:

Nature of Work	Civil Works for the construction with repairing of out side boundary wall at Feeder Dairy (BCMPUL),Panchanantala , Berhampore , P.S- Murshidabad,Pin-742101.
Scope of Work	As per (Annexure – A)
Estimated Cost of Work	Rs. 7,93,515.00/-
Bid Inviting Authority	The Managing Director of The Bhagirathi Cooperative Milk Producers' Union Limited
Earnest Money Deposit (EMD)	<p>The EMD amounting to Rs. 15,870.00/- which is 2% of the Estimated Cost of Work should be deposited online through Net Banking, NEFT/RTGS in favour of The Bhagirathi Cooperative Milk Producers' Union Limited payable at Berhampore.EMD shall not carry interest.</p> <p>Tender will select the Tender to bid and initiate payment of pre-defined EMD for that tender by selecting from either of the following payments modes (vide Finance Department Memorandum no. 3975-F(Y) Dt. 28/07/2016) :</p> <p>1. Net banking (any of the banks listed in the ICICI Bank Payment gateway) in case of payment through ICICI Bank Payment Gateway.</p>

	<p>2. RTGS/NEFT in case of offline payment through bank accounts in any Bank.</p> <p>Payment procedure.</p> <p>a) Payment by Net Banking (any listed bank) through ICICI Bank Payment Gateway :</p> <ol style="list-style-type: none"> 1. On selection of net banking as the payment mode, the bidder will be directed to ICICI Bank Payment Gateway webpage (along with a string containing a Unique ID) where he will select the Bank through which he wants to do the transaction. 2. Bidder will make the payment after entering his Unique ID and password of the bank to process the transaction. 3. Bidder will receive a confirmation message regarding success/failure of the transaction. <ol style="list-style-type: none"> 1. If the transaction is successful, the amount paid by the bidder will get credited in the respective Pooling account of The Bhagirathi Cooperative Milk Producers' Union Limited maintained with the Focal Point Branch of ICICI Bank at R.N. Mukherjee Road, Kolkata for collection of EMD/Tender Fees. 2. For transaction failure, the bidder will again try for payment by going back to the first step. <p>b) Payment through RTGS/NEFT:</p> <ol style="list-style-type: none"> 1. On selection of RTGS/NEFT as the payment mode, the e-Procurement portal will show a pre-filled challan having the details to process RTGS/NEFT transaction. 2. The bidder will print the challan and use the pre-filled information to make RTGS/NEFT payment using his Bank account. 3. Once payment is made, the bidder Will come back to the e-Procurement portal after expiry of are asonable time to enable the NEFT/RTGS process to complete, in order to verify the payment made and continue the bidding process. 4. If verification is successful, the fund will get credited to the respective Pooling account of The Bhagirathi Cooperative Milk Producers' Union Limited maintained with the Focal Point Branch of ICICI Bank at R.N. Mukherjee Road for collection of EMD/Tender Fees. 5. Hereafter, the bidder will go to e-Procurement portal for submission of his bid. 6. But if the payment verification is unsuccessful, the amount will be returned to the bidder's account. <p>B. Refund/Settlement Process:</p> <ol style="list-style-type: none"> i. After opening of the bids and technical evaluation of the same by the Quotation inviting authority through electronic processing in the e-Procurement
--	---

	<p>portal of the State Government, the Quotation inviting authority will declare the status of the bids as successful or unsuccessful which will be made available, along with the details of the unsuccessful bidders, to ICICI Bank by the e-Procurement portal through web services.</p> <p>ii. On receipt of the information from the e-Procurement portal, the Bank will refund, through an automated process, the EMD of the bidders disqualified at the technical evaluation to the respective bidders' bank accounts from which they made the payment transaction. Such refund will take place within T+2 Bank Working Days where T will mean the date on which information on rejection of bid is uploaded to the e-Procurement portal by the Tender inviting authority.</p> <p>iii. Once the financial bid evaluation is electronically processed in the e-Procurement portal, EMD of the technically qualified bidders other than that of the L1 and L2 bidders will be refunded, through an automated process, to the respective bidders' bank accounts from which they made the payment transaction. Such refund will take place within T+2 Bank Working Days where T will mean the date on which information on rejection of financial bid is uploaded to the e-Procurement portal by the Quotation inviting authority. However, the L2 bidder should not be rejected till the LOI process is successful.</p> <p>iv. If the L1 bidder accepts the LOI and the same is processed electronically in the e-Procurement portal, EMD of the L2 bidder will be refunded through an automated process, to his bank account from which he made the payment transaction. Such refund will take place within T+2 Bank Working Days where T will mean the date on which information on Award of Contract (AOC) to the L1 bidder is uploaded to the e-Procurement portal by the tender inviting authority.</p> <p>v. As soon as the L1 bidder is awarded the contract (AOC) and the same is processed electronically in the e-Procurement portal –</p> <p>a) EMD of the L1 bidder for tenders of State Government offices will automatically get transferred from the pooling account to the State Government deposit head “8443-00-103-001-07” through GRIPS along with the bank particulars of the L1 bidder.</p> <p>b) EMD of the L1 bidder for tenders of the State PSUs/Autonomous Bodies/Local Bodies/PRIs, etc will automatically get transferred from the pooling account to their respective linked bank accounts along with the bank particulars of the L1 bidder. In both the above cases, such transfer will take place within T+1 Bank Working Days where T will mean the date on which the Award of Contract (AOC) is issued.</p> <p>vi. The Bank will share the details of the GRN No. generated on successful entry in GRIPS with the E-Procurement portal for updation.</p> <p>vii. Once the EMD of the L1 bidder is transferred in the manner mentioned above, Tender fees, if any, deposited by the bidders will be transferred electronically from the pooling account to the Government revenue receipt head “0070-60-800-013-27” through GRIPS for Government tenders and to the respective linked bank accounts for State PSU/Autonomous Body/Local</p>
--	--

	<p>Body/PRIs,etc tenders.</p> <p>viii. All refunds will be made mandatorily to the Bank A/c from which the payment of EMD & Tender Fees (if any) were initiated</p>
Bid Document	<p>The bid document is available in the E-Tendering Portal of Govt. of West Bengal https://wbtenders.gov.in .</p>
Statutory & Non Statutory Documents (Technical Bid)	<ol style="list-style-type: none"> 1. GST Registration Certificate 2. KYC (AADHAR/VOTER CARD/DRIVING LICENSE/PASSPORT) 3. IT Return of last three years, EMD receipt 4. Pan Card, Trade License 5. Credentials of execution of civil works at any Govt. / autonomous/private organization worth Rs. 3.95 lakhs & above. <p><i>N.B. The signed copy of NIT in all pages shall be uploaded in NIT Folder and all the statutory documents mentioned above shall be uploaded in Technical Bid Folder. It is to be noted that no documents is needed to be sent physically. Bid not accompanied by the aforesaid documents shall not be accepted for evaluation.</i></p>
Financial Bid	<p>Rate shall be quoted in the Financial bid. The bidder shall quote the rate online through Computer only in the space marked for quoting rate in the Bill of Quantities (BOQ). Only downloaded copies of the above documents, digitally signed by the bidder are to be uploaded (Excel file).</p>
Validity of Bid	<p>365 days.</p>
Download of Tender	<ol style="list-style-type: none"> 1. Download of Tender Tender to be downloaded only from the e-Tendering portal of Govt. of West Bengal i.e. https://wbtenders.gov.in .The tender will be submitted in two bid system i.e. Technical bid & Financial bid only through online. 2. Online Bid submission procedure <ol style="list-style-type: none"> i. Registration of Bidders: Agencies/Bidders who are interested in participating e-tenders will have to get enrolled & registered with the Government e-Procurement system. through logging on to https://wbtenders.gov.in ii. Digital Signature certificate (DSC): Each bidders is required to obtain a class-II or Class-III Digital Signature Certificate (DSC) having Signing and Encryption certificate for submission of tenders from the approved service provider of the National Information's Centre (NIC) on payment of requisite amount or any service provide as may be allowed by the Finance Department, Govt. of West Bengal. iii. Tender Download: The bidders can search & download NIT & Tender Documents electronically from computer once he logs in to the e-Tendering portal https://wbtenders.gov.in using the Digital Signature Certificate. This is the only mode of collection of Tender Documents. iv. Submission of Tenders: General process of submission, Tenders are to be submitted through online to the stipulated website in two folders, (one is Technical Bid & the other is Financial Bid) before the prescribed date & time using the Digital Signature Certificate (DSC). The documents are

	to be uploaded duly digitally signed. The documents will get encrypted (transformed into non readable formats).
Award of Contract	The bidder selected after evaluation of financial bid by the tender committee will be given Award of Contract, subject to fulfillment of Terms and Conditions provided in the tender.
Publication of Tender	<ol style="list-style-type: none"> 1. E-Procurement Portal Govt. of West Bengal (https://wbtenders.gov.in) 2. Website of the Milk Union (www.bhagirathimilk.com) 3. Office Notice Board

GENERAL TERMS AND CONDITIONS:

1. Tender fees of Rs. 1000.00/- & any conditional or incomplete Tender shall not be accepted.

2. The lowest successful Tender/bidder must commission the work within a period of 10 days from the date of issue and subsequent acceptance of Award of Contract (AOC) & Work Order (WO).
3. The rate quoted must be inclusive of all labour and material required for the Job. The Tender involves scope of supply and service. Any expenditure other than the quoted rate shall not be accepted.
4. No escalation in price / rate will be allowed on any ground and no claim in this regard shall be entertained.

5. EMD of the lowest successful bidder who has been awarded with the Contract shall be converted into Security deposit and shall be released after 12 months successful completion of the Work duly approved by the Competent Authority. EMD of unsuccessful bidders shall be released within 1 month after the AOC has been awarded to the lowest bidder. EMD shall not carry any interest.

6. No mobilization advance shall be given for this contract at any cost. Similarly no bills shall be reimbursed on pro-rata basis.
7. The rate quoted by the Tender must be inclusive of all required materials in adherence to schedule of job as furnished in the Tender.

8. Terms of Payment:

Payment will only be made in NEFT/RTGS after approval from Competent Authority. Three copies of invoices must be submitted for payment .The payment shall be released in two phases:

1. 90% payment shall be made within 60 days after successful completion of the job duly certified by the Departmental In-Charge and approved by Competent Authority.

2. Remaining 10% payment shall be made after 12 months of successful completion of the job. This 10% shall serve as performance guarantee. In case there the work is found to be

faulty due to negligence or use of inferior quality material by the contractor which is found after release of 90% payment the performance guarantee shall be forfeited and the contractor shall straightaway be blacklisted for 3 years.

9. Liquidated damage: Liquidated damage of 0.5% per day of the total cost of the Tender awarded to the bidder shall be charged if there is any delay in completion or inception of the job subjected to a maximum of 10% and the cost shall be recovered from the Contractor by deducting from the bills.
10. If the tender has already been blacklisted by any Government/ Government Undertakings/ Co-operative societies, his tender will be rejected. In case information about such black listing comes to the knowledge of the Union after awarding of the tender, the contract will be terminated, liquidated damages levied, apart from taking penal action.

11. EMD shall be forfeited if the lowest bidder fails to execute the job after getting Award of Contract or withdraws the bid.

12. BCMPUL reserves the right to accept or reject any or all tender wholly / partly at any point of time without assigning any reason thereof.
13. Force Majeure: For any delay in job not attributable to the Contractor and the Milk Union shall be termed as Liquidated damage such as war, lockouts, catastrophe or any act of God. No liquidated damage on account of the Contractor shall be deducted for this clause.
14. Successful bidder has to complete the work within 30 days after issuance of the work order.
15. For any disputes between the Milk Union and Contractor the decision of the Milk Union shall be the final and binding.
16. The tender must satisfy himself thoroughly about the spot and the requirement of the Union before submitting his tender.
17. The person signing the tender should be the Proprietor / Partner / Managing Director or any other person duly authorized to sign the tender document. In the latter case, authorization letter should be attached.
18. The tender should read every page and understand the implications fully and offer the tender only if he could discharge the obligations set out in the tender document.

Sd/-

Managing Director
The Bhagirathi Cooperative
Milk Producers' Union Limited

Copy forwarded to:

1. <https://wbenders.gov.in>
2. www.bhagirathimilkcom
3. Office Notice Board

campus, feeder dairy, Panchanantala, Murshidabad, W.B (80 mt. Length)

Boundary Wall

Sl.	Description of Work	Quantity	Rate	Unit	Amount
A.Civil Work on Ground floor					
1.	Page- 1, Item-2 : Earthwork in excavation of foundation trenches or drains, in all sorts of soil(including mixed soil but excluding laterite or sand stone) including removing, spreading or stacking the spoils within a lead of 75m as directed. The item includes necessary trimming the sides of trenches, leveling, dressing & ramming the bottom, bailing out water as required complete.				
	Gr. Floor-				
	Footing				
	S/C	20.79 m ³			
	J/C	12.38 m ³			
	Tie	8.40 m ³			
		41.57 m ³	41.565 m ³	Rs.11,927.00 %m ³	Rs.4,957.00
2	Page- 2, Item-4(A) : (A) Filling in foundation or plinth by silver sand in layers not exceeding 150 mm as directed and consolidating the same by thorough saturation with water, ramming complete including the cost of supply of sand. (payment to be made on measurement of finished quantity)				
	Gr. Floor- a)n With earth obtained from foundation-				
	Foundation -- 1/3rd	13.855 m ³	13.855 m ³	Rs.599.61 %m ³	Rs.8,308.00
3	Page-34, Item- 22.I.A.a: Cement concrete with graded stone ballast (40 mm size excluding shuttering) In ground floor (A) [Pakur Variety]				
	i) In proportion 1:3:6				
	In Footing				
	S/C	1.58 m ³			
	J/C	0.98 m ³			
		2.55 m ³	2.550 m ³	Rs.5,189.00 m ³	Rs.13,232.00
4	Ordinary Cement concrete (mix 1:2:4) with graded stone chips (20 mm nominal size) excluding shuttering and reinforcement,if any, in ground floor as per relevant IS codes.				
	a) Pakur Variety				
	S/C	1.58 m ³			
	J/C	0.98 m ³			
		2.55 m ³	2.550 m ³	Rs.5,413.43 m ³	Rs.13,804.00
5	Page-15, Item- 8 : Brick-work with 1st class bricks in cement mortar (6:1) in Superstructure of				
	A. In foundation and upto Plinth				
	0	0.00 m ³	0.000 m ³	Rs.4,928.00 m ³	Rs.0.00
	B. In Superstructure: G.F. (1:6)				

Sl.	Description of Work												Quantity	Rate	Unit	Amount
			1	X	80.00	X	0.250	X	1.800	=	36.00	m ³				
										=	36.00	m ³				
		Less Column														
		Sn Colm	21	X	0.250	X	0.250	X	1.800	=	-2.36	m ³				
		Jt Colm	10	X	0.550	X	0.250	X	1.800	=	-2.48	m ³				
										=	4.84	m ³				
											31.16	m ³	31.160 m ³	Rs.5,151.00	m ³	Rs.1,60,505.00
6	Page- 42, Item- 36. a : Hire and labour charges for shuttering with centering and necessary staging upto 4 m using approved stout props and thick hard wood planks of approved thickness with required bracing for concrete slabs, beams and columns, lintels curved or straight including fitting, fixing and striking out after completion of works (upto roof of ground floor)															
	(a) 25 mm to 30 mm thick wooden shuttering as per decision & direction of Engineer-In-Charge.															
	Ground Floor															
	Column															
	Sn C	21	X	1	X	1.000	X	1.800		=	37.80	m ²				
	Jt C	10	X	1	X	1.850	X	1.800		=	33.30	m ²				
	Tie															
		1	X	2	X	80.000	X	0.250		=	40.00	m ²				
	Capping															
		1	X	2	X	80.000	X	0.100		=	16.00	m ²				
											127.10	m ²	127.100 m ²	Rs.330.00	m ²	Rs.41,943.00
7	Page-26, Item- 10.i : Ordinary cement concrete (Mix 1: 1.5 : 3) with graded stone chips (20 mm nominal size) excluding shuttering and reinforcement, if any as per IS 456-2000.															
	With stone chips of Pakur variety															
	Footing															
	Sn C	21	X	1	X	0.900	X	0.900	X	0.250	=	4.25	m ³			
		21	X	1	X	0.450	X	0.450	X	0.250	=	1.06	m ³			
		21	X	1	X	0.250	X	0.250	X	0.150	=	0.20	m ³			
		21	X	1	X	0.250	X	0.250	X	1.800	=	2.36	m ³			
	Jt C	10	X	1	X	1.200	X	1.200	X	0.250	=	3.60	m ³			
		10	X	1	X	0.700	X	0.700	X	0.250	=	6.12	m ³			
		10	X	1	X	0.250	X	0.250	X	0.150	=	0.09	m ³			
		10	X	1	X	0.250	X	0.250	X	1.800	=	1.13	m ³			
	Tie															
	ISW											m ³				
		1	X	1	X	80.000	X	0.250	X	0.250	=	5.00	m ³			
	Capping															
		1	X	1	X	80.000	X	0.250	X	0.100	=	2.00	m ³			
		1	X	1	X	12.200	X	0.250	X	0.250	=	0.76	m ³			
	Ext. beam										26.58	m ³	26.580 m ³	Rs.5,515.08	m ³	Rs.1,46,591.00
8	Page-28, Item- 15.a(i)& b : Reinforcement for reinforced concrete work in all sorts of structures including distribution bars, stirrups, binders etc, initial straightening and removal of loose rust (if necessary), cutting to requisite length, hooking and binding to correct shape placing in proper position an binding with 16 gauge black annealed wire in every intersection, complete as per drawing and direction.															
	Category of steel : Other than-TATA, Non-SAIL, Non-RINL															

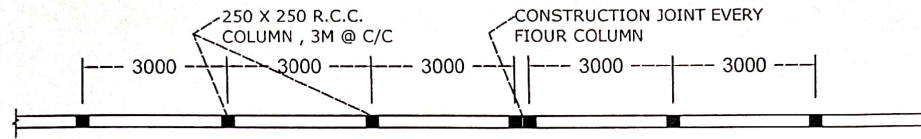
389340.00

Sl.	Description of Work										Quantity		Rate	Unit	Amount					
	1.10%	of concrete volume																		
	=	1.10%	x	26.58	m ³															
	@	7.856	MT per m ³ of conc.										=	2.30	MT	2.300	MT	Rs.60,003.00	MT	Rs.1,38,007.00
9	Page-189, Item- 1.i, b, c, & ii.c : Plaster (to wall, floor, ceiling etc.) with sand and cement mortar including rounding off or chamfering corners as directed and raking out joints, including throating, nosing and drip course, scaffolding / staging where necessary.																			
	b) 20 mm thick plaster in cement-sand mortar (1:6)																			
	Ground Floor																			
	Out side Wall	1	X	80.000	X	1.900		=	152.00	m ²										
	In side Wall	1	X	80.000	X	1.900		=	152.00	m ²										
	Top	1	X	80.000	X	0.250		=	20.00	m ²										
										m ²										
	Less gate	0	X	0.450	X	1.800		=	0.00	m ²										
									324.00	m ²	324.000	m ²	Rs.163.00	m ²		Rs.52,812.00				
10	Page-104 Item-11 : M.S. round or square bar grating of windows etc. fitted and fixed in holes of window frame and with intermediate flat bar stiffener(with necessary holes for the grating bars and with the ends turned and fixed to timber frame with necessary screws) complete, as directed.																			
	Bar size (40mm x 40mm x 6mm)																			
	21+ (10*2)			41	x	1.20	m	=	49.200	m										
				49.20	x	0.08	x	0.006	=	0.024	cum									
				0.024	Cum	x	78.50	=	1.854	qtl	1.854	Qntl	Rs.8,647.00	Qntl		Rs.16,030.00				
11	Page-220 Item-2(b) : (b) Supplying, fitting galvanised 2 ply 12 gauge / 2 points line of barbed wire in fencing (holes already made in the body of the post) or fixed by staples tightening and fixing the wires in taut condition with straining bolts including the cost of cutting and of lapping joints in the wire as necessary but excluding the cost of galvanised staples, straining bolt and binding wire as necessary 2 ply 12 gauge/ 2 points.																16032.00			
		5		line	x	80.000	m	=	400.00	m										
									400.00	m	400.00	m	Rs.24.83	m		Rs.9,932.00				
12	Page-220 Item-4a(i) : Supplying galvanised straining bolts (with eye at one end with double nuts and washers) fitted and fixed complete.																			
	10 mm dia 150mm long																			
		18	X	10	no			=	180	nos	180.000	Each	Rs.43.00	Each		Rs.7,740.00				
13	Page-221 Item-5.a : Supplying galvanised straining bolts (with eye at one end with double nuts and washers) fitted and fixed complete.																			
	19 mm. to 25 mm. size																			
		77	X	10	nos			=	770	nos	770.000	nos	Rs.2.22	/Each		Rs.1,709.00				
14	Page-200 ; Item-1. a : Priming one coat on steel or other metal surface with synthetic oil bound primer of approved quality including smoothening surfaces by sand papering etc.																			
	Steel surface																			
	Bar	1	X	49.200	X	0.080		=	3.94	m ²										
									3.94	m ²	3.940	m ²	Rs.29.00	m ²		Rs.114.00				
15	Page-200 ; Item-2. a & b : (A) Painting with best quality synthetic enamel paint of approved make and brand including smoothening surface by sand papering etc. including using of approved putty etc. on the surface, if necessary : iv) Two coats (with any shade except white)																			
	Steel surface																			
				Same quantity 16 nos including				=	3.94		3.940	m ²	Rs.77.00	m ²		Rs.303.00				

615989.00

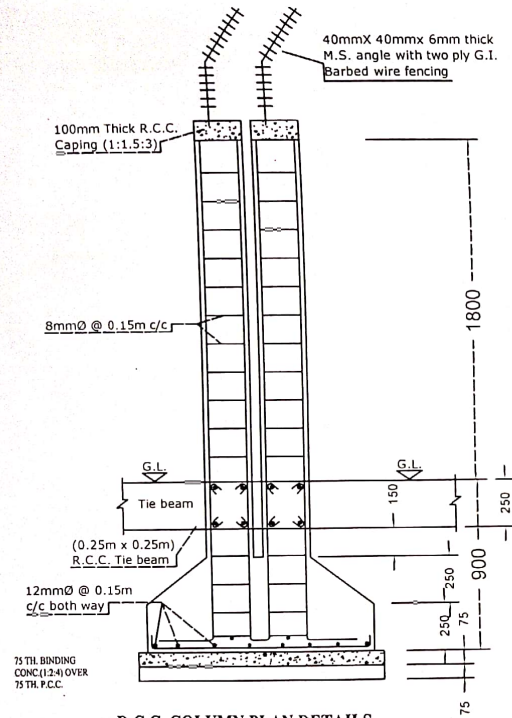
615989.00

Sl.	Description of Work	Quantity	Rate	Unit	Amount
16	Page-195 ; Item-7 : Applying Interior grade Acrylic Primer of approved quality and brand on plastered or concrete surface old or new surface to receive Distemper/ Acrylic emulsion paint including scraping and preparing the surface throughly, complete as per manufacturer's specification and as per direction of the EIC. (In Ground Floor)				
	(a) One Coat				
	Same quantity plaster including	= 303.75 m ²	303.750 m ²	Rs.3,080.00 %m ²	Rs.9,356.00
17	Page-196 ; Item-10: Acrylic Distemper to interior wall, ceiling with a coat of solvent based interior grade acrylic primer (as per manufacturer's specification) including cleaning and smoothing of surface.				
	Two Coats				
	Same quantity plaster including	= 303.75 m ²	303.750 m ²	Rs.70.00 m ²	Rs.21,263.00



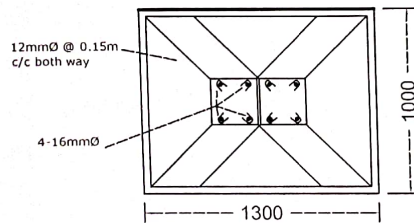
PROPOSED PLAN

(SCALE 1: 100)



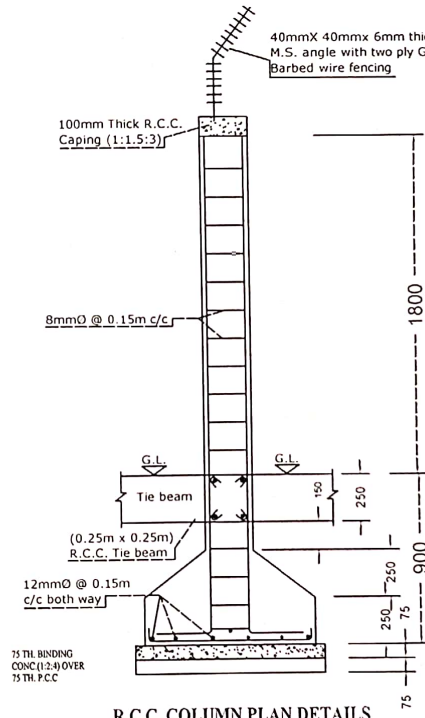
R.C.C. COLUMN PLAN DETAILS

(SCALE 1: 25)



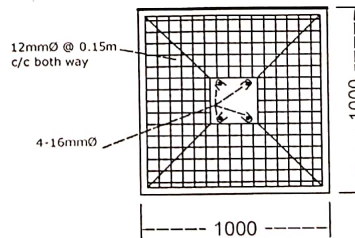
R.C.C. COLUMN FOOTING DETAILS

(SCALE 1: 25)



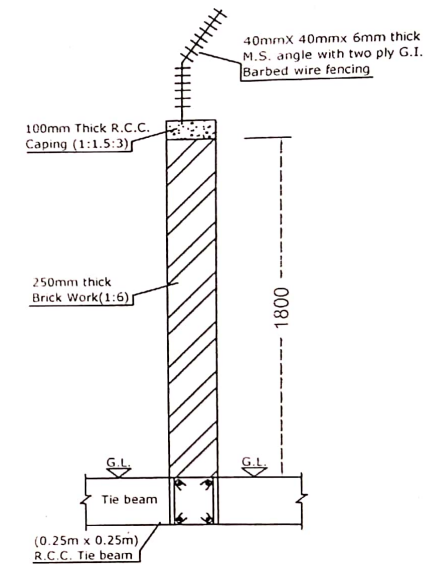
R.C.C. COLUMN PLAN DETAILS

(SCALE 1: 25)



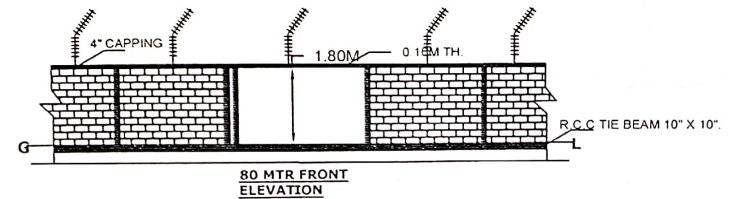
R.C.C. COLUMN FOOTING DETAILS

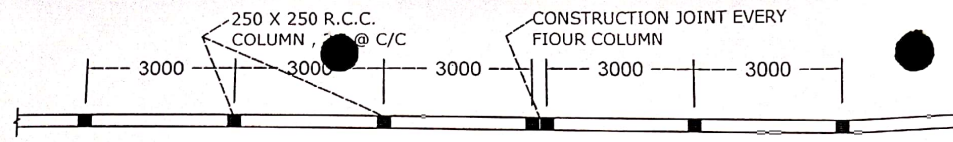
(SCALE 1: 25)



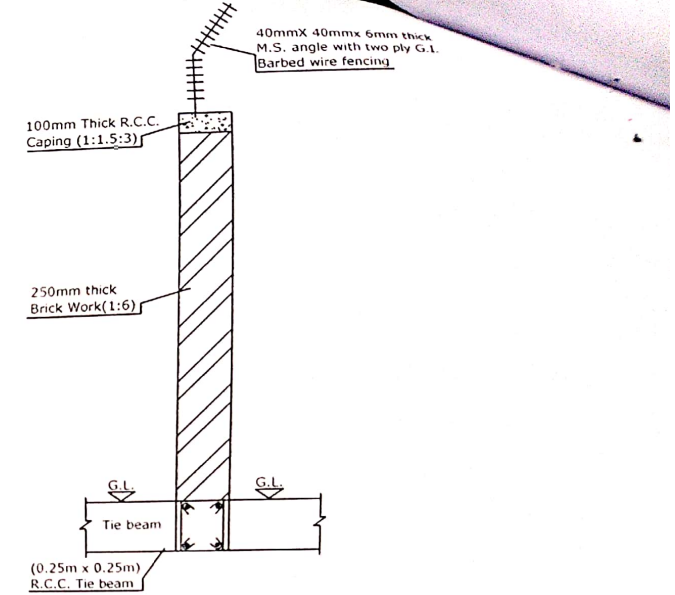
SECTION OF BOUNDARY WALL

(SCALE 1: 25)

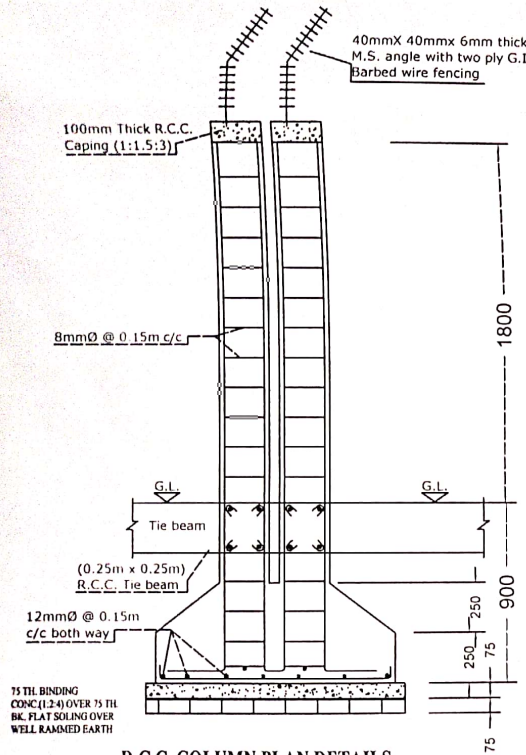




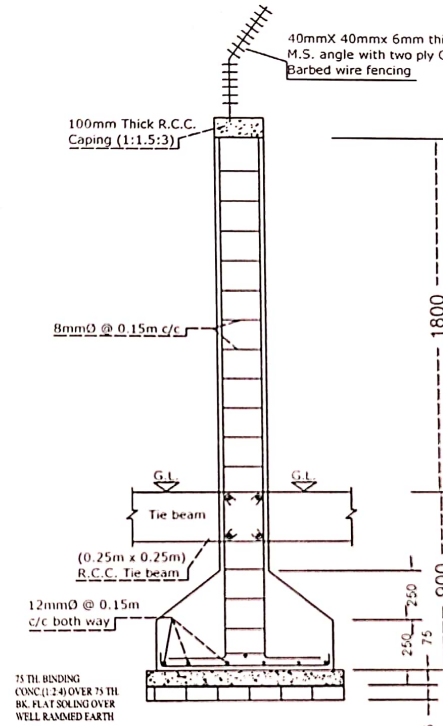
PROPOSED PLAN
(SCALE 1: 100)



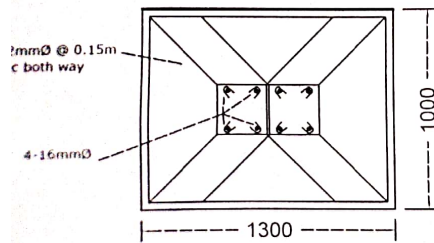
SECTION OF BOUNDARY WALL
(SCALE 1: 25)



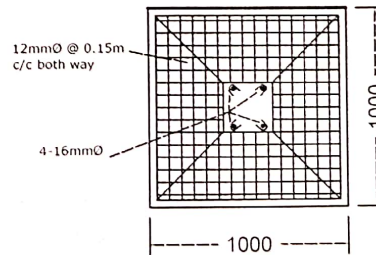
R.C.C. COLUMN PLAN DETAILS
(SCALE 1: 25)



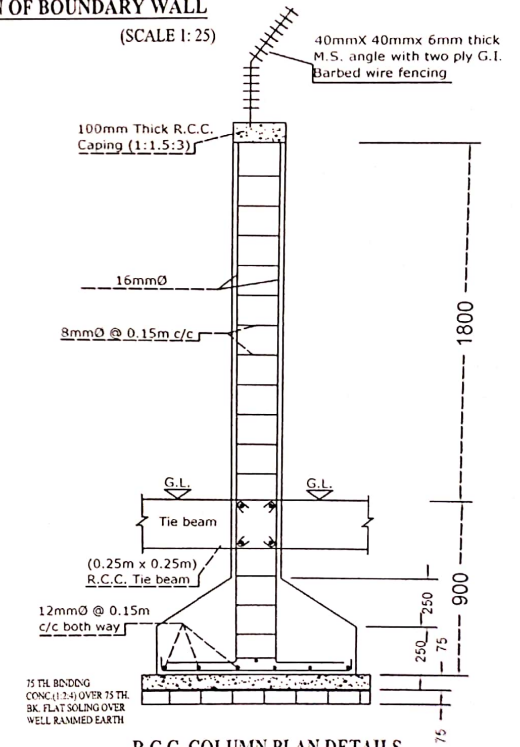
R.C.C. COLUMN PLAN DETAILS
(SCALE 1: 25)



R.C.C. COLUMN FOOTING DETAILS
(SCALE 1: 25)



R.C.C. COLUMN FOOTING DETAILS
(SCALE 1: 25)



R.C.C. COLUMN PLAN DETAILS
(SCALE 1: 25)